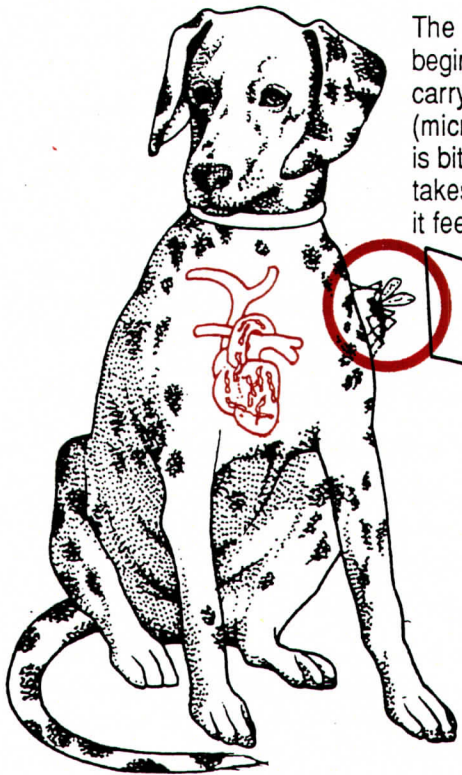


**HOLT  
VETERINARY  
CLINIC**

**Hugh T. Fauser, M.S., D.V.M.  
1836 Cedar Street  
Holt, Michigan 48842  
Phone: (517) 694-9510**

## **Heartworm Disease: A Deadly Threat**

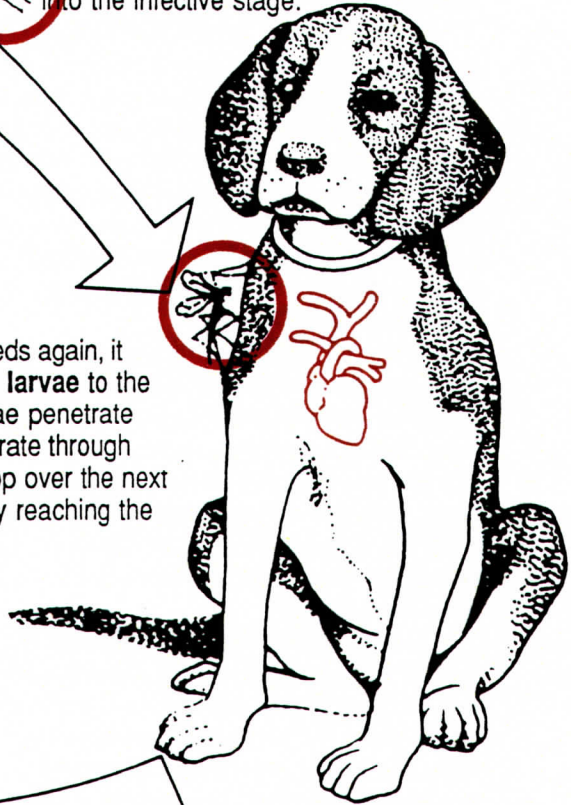


The life cycle of the heartworm begins when an infected dog, carrying tiny immature heartworms (microfilariae) circulating in its blood, is bitten by a mosquito. The mosquito takes in microfilariae (larvae) when it feeds.



During the next two-three weeks, the larvae develop within the mosquito into the infective stage.

When the mosquito feeds again, it can transmit **infective larvae** to the healthy dog. The larvae penetrate the dog's skin and migrate through the tissues and develop over the next few month's eventually reaching the dog's heart.



Once in the dog's heart, the worms can grow to as long as 14 inches and cause significant damage to the heart, lungs and other vital organs. **If left untreated, heartworm disease can result in death.**

*Taken in part from the AVMA News.*

**VETERINARY FILE: HEARTWORM DISEASE A DEADLY THREAT**

**ANY FURTHER QUESTIONS YOU MAY HAVE CAN BE ANSWERED BY CALLING OUR OFFICE.  
PRACTICE OF VETERINARY MEDICINE, SURGERY AND DENTISTRY**